



# **USER MANUAL**

**Servo Motor Type Single Phase AVR**

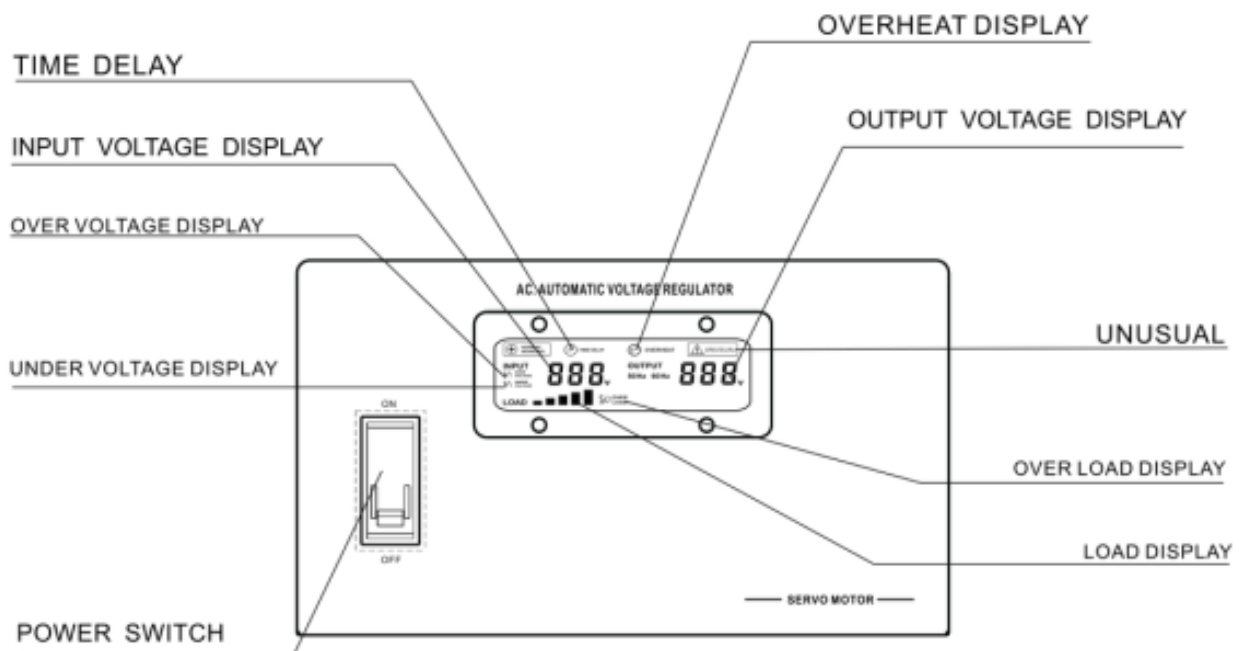
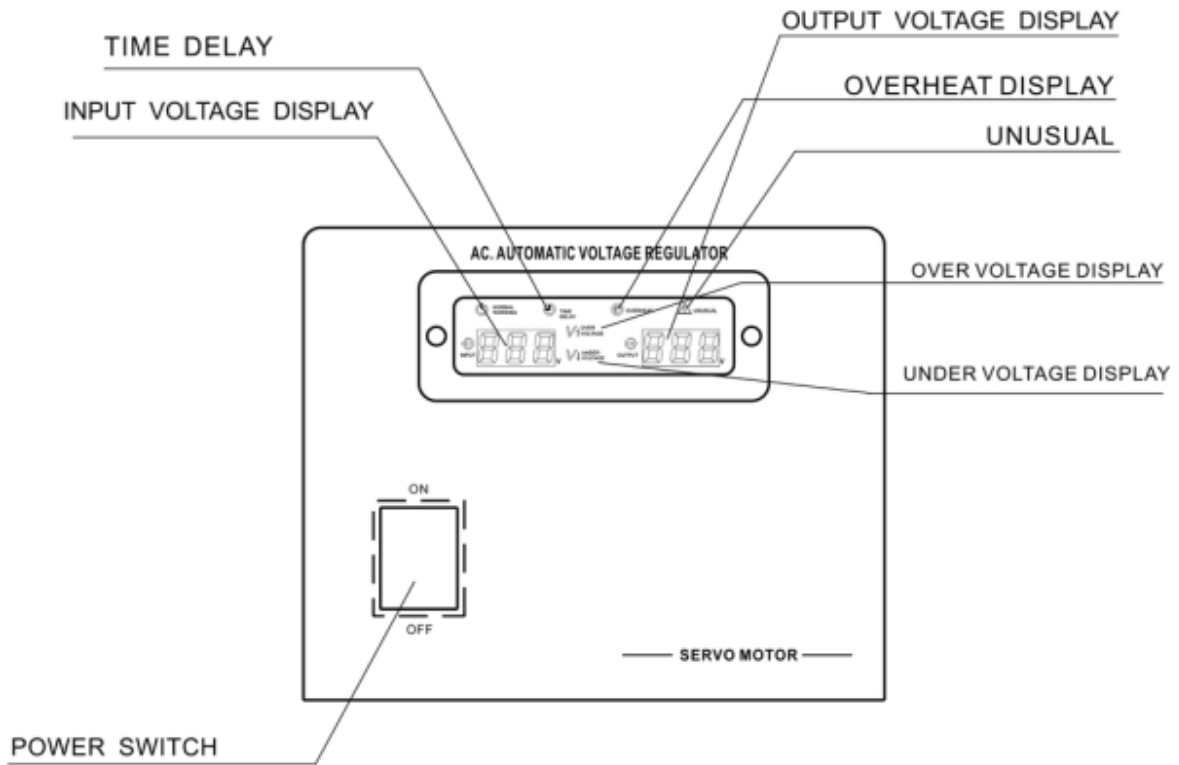
**Digital Plus AVR Series**

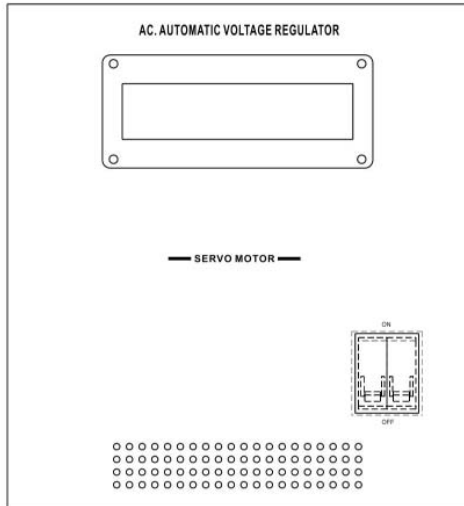
**1K/2K/3K/5K/8K/10K/15K/20K/30KVA**

Maruson Technology Corporation  
1351 Titan Way, Brea, CA 92821, U.S.A.  
Tel: 1-714-870-6888, Fax: 1-714-870-4888, Toll Free: 1-888-MARUSON  
Website : [www.MarusonUSA.com](http://www.MarusonUSA.com)  
E-Mail: [Info@MarusonUSA.com](mailto:Info@MarusonUSA.com)

## Caution

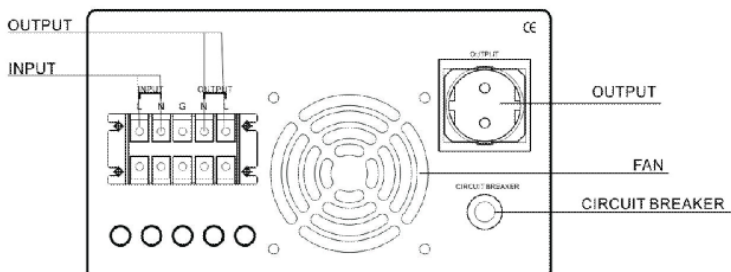
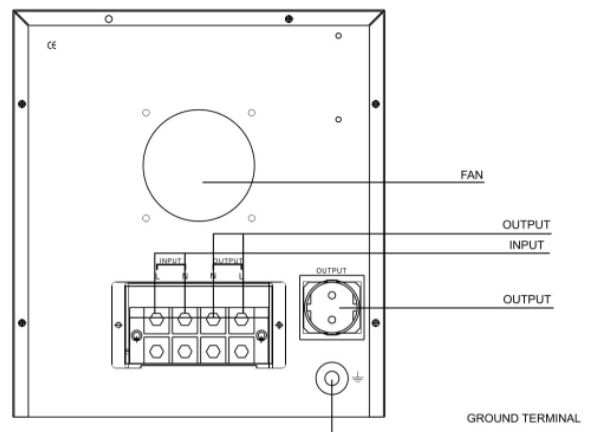
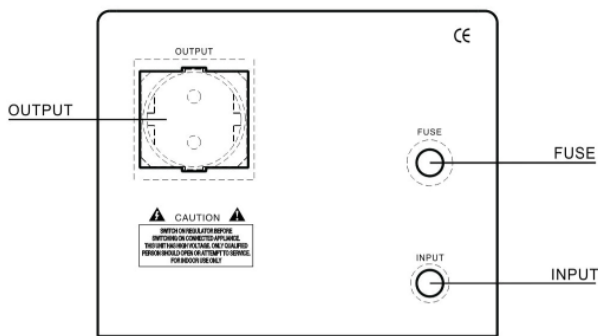
- Avoid overloading  
Do not use the regulator beyond its maximum power capacity.
- When connected to any appliance with built-in motor compressor, the starting power is generally several times of the appliance's listed power rating. Make sure that the total starting power capacity of all connected appliance does not exceed the listed maximum output power capacity of the regulator. For color TV set, calculate it twice as its listed capacity.
- Make sure that the regulator is of the same output voltage and frequency as the appliance's it connected.
- Make sure that the voltage of electrical source is within the listed input voltage range of the regulator.
- Always place the regulator in an environment that is:
  - well ventilated.
  - not exposed to direct sunlight or heat source.
  - out of reach from children.
  - away from water, moisture, oil or grease.
  - away from any flammable substance.





COMBINED FLASHING FOR PROTECTION ACTIVATED DISPLAY

- Over voltage + unusual both flashing for high voltage protection;
- Under voltage + unusual both flashing for low voltage protection;
- Overload + unusual both flashing for overloading protection;
- Overheat + unusual both flashing for high temperature protection;



**REMARK:** Input plugs and output sockets could be changed as request. Please operate refer to the practicality.

15KVA/20KVA/30KVA



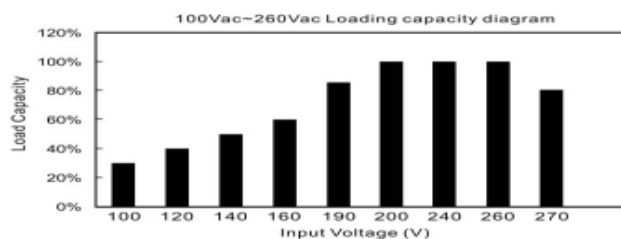
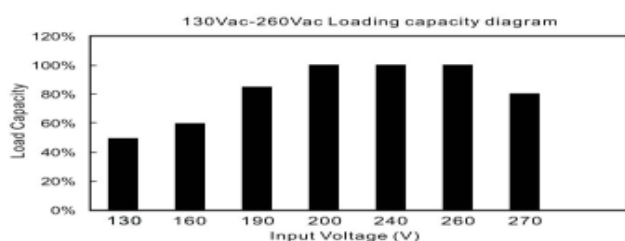
15KVA/20KVA/30KVA REAR PANEL



**SPECIFICATION**

<b>Capacity</b>	1KVA/2KVA	3KVA/5KVA	8KVA/10KVA	15KVA/20KVA/30KVA		
<b>Input Range</b>	<b>130V-250V / 150V-260V</b>					
<b>W Model</b>	1KVA/2KVA (Wider Input V)	3KVA/5KVA (Wider Input V)	8KVA/10KVA (Wider Input V)	/		
<b>Input Range</b>	<b>105V-250V / 115V-260V</b>			/		
<b>Rated Capacity</b>	1KW/2KW	3KW/5KW	8KW/10KW	15KW/20KW/30KW		
<b>Phase</b>	Single phase					
<b>Transformer</b>	C.R.G.O. toroidal transformer					
<b>Indicator</b>	LED graphic					
<b>Precision</b>	±3%					
<b>Output Voltage</b>	<b>220V / 230V</b>					
<b>Efficiency</b>	≤98%					
<b>Protection</b>	Overload/high temperature/high voltage/low voltage(optional)/short circuit					
<b>Cooling System</b>	Yes					
<b>Storage Temperature</b>	0°C-40°C					
<b>Relative Humidity</b>	5%-95%					
<b>Size(mm)</b>	255×168×146	292×255×146	388×302×210	552×350×675		
<b>N.W. (kg)</b>	6/7.2	10.3/12.8	21.1/23.5	56	62.3	69
<b>N.W. (kg) W Model</b>	6.8/8.1	11.5/13.4	23.3/26.5	/	/	/
<b>Qty/ctn</b>	2	1	1	1		
<b>Carton Size(mm)</b>	445×335×215	390×370×240	500×435×320	660×455×785		
<b>G.W (kg)</b>	7.6/8.8	11.7/14.2	22.9/25.3	68	64.3	72
<b>G.W (kg) W Model</b>	8.4/9.7	12.9/14.8	25.1/28.3	/	/	/

**THE REGULATOR'S MAXIMUM OUTPUT POWER WILL CHANGE AS THE DIAGRAM SHOWN BELOW.**



**MAKE SURE THAT THE TOTAL LOAD POWER DOES NOT EXCEED THE LISTED MAXIMUM OUTPUT POWER OF THE REGULATOR.**

**\* Specification are subjected to change without prior notice.**